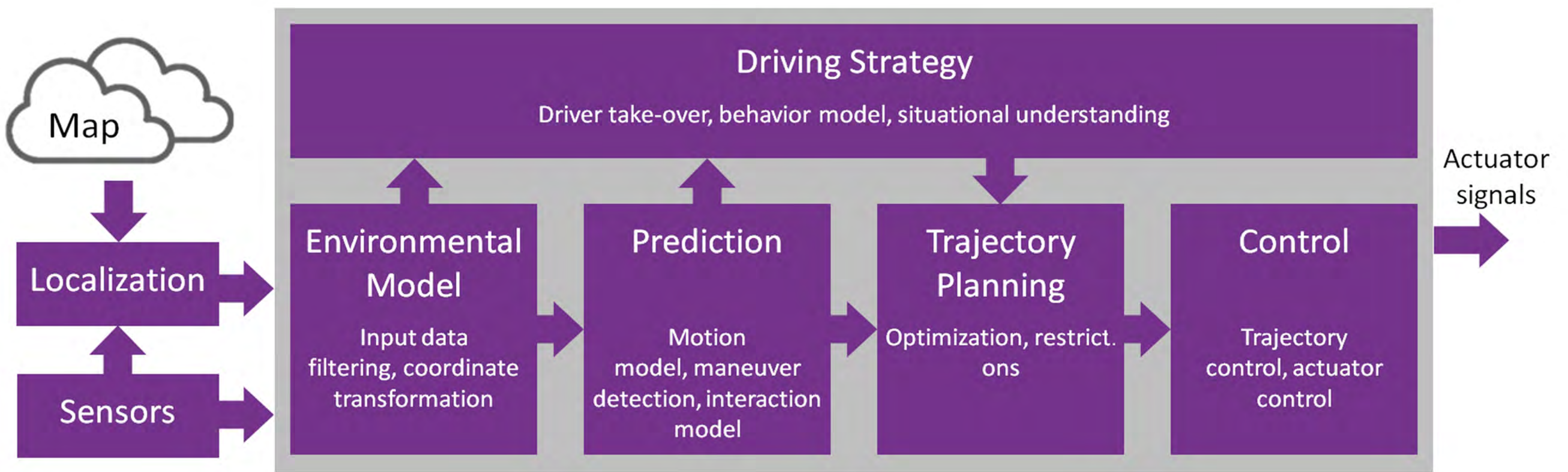
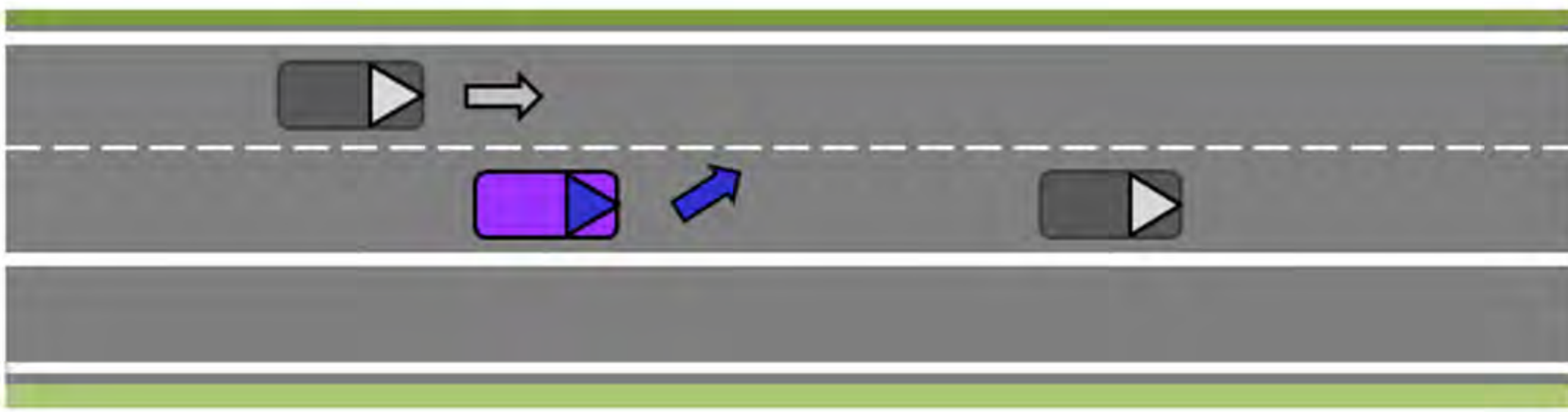
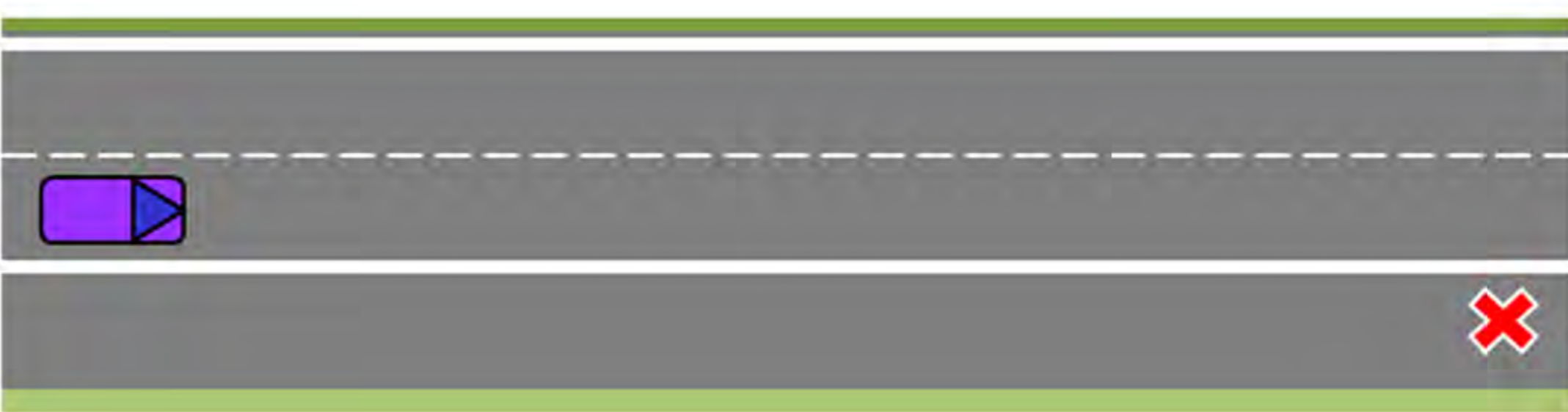


Highway Drive and Hazard Detection

LANE KEEPING AND OVERTAKING



ROAD HAZARD DETECTION AND INFORMATION



- Early information prior to being in visual range
- Allows strategic vehicle reaction
 - Sufficient time for driver take-over (if required)

Opel Ko-HAF Scenario: Road Hazard on Emergency Lane



Communication **TO** Server upon detecting

Information **FROM** Server upon approaching



Aggregation

HIGHWAY EXIT

